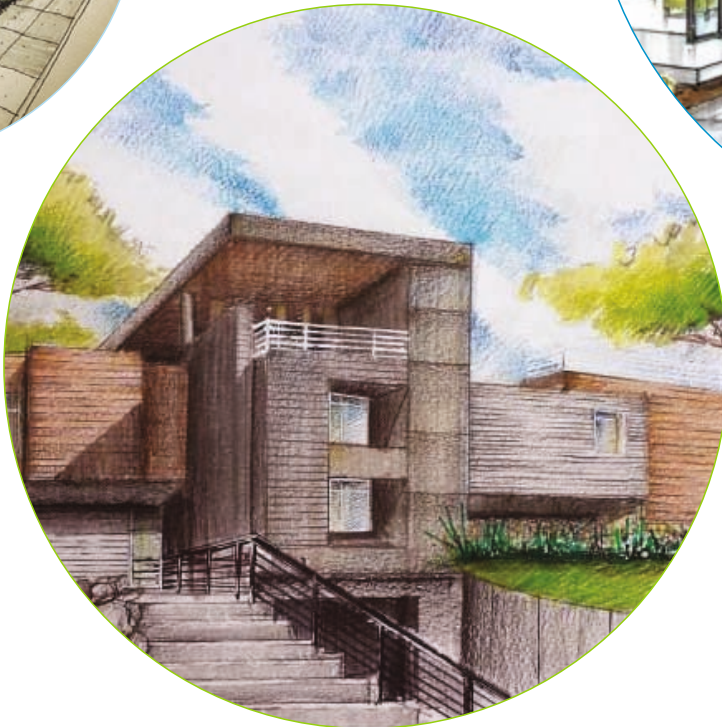
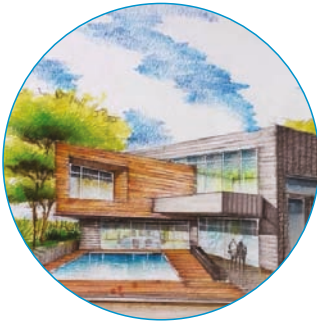


Elegance your Design...

..... Enhance the Possibilities



# WOOD POLYMER COMPOSITE

Wood Polymer Composites (WPC's) are composite materials made of wood fiber and thermoplastics. WPC, being a high technology composite substitute to replace wood for outdoor use, is a popular choice of material in modern day construction. What is most remarkable about wood polymer composite is that it can be created entirely from recycled materials collected from C&D operations, wood product manufacturing facilities and more. To top it off, used WPC can even be recycled to create brand new WPC, making WPC the ultimate recyclable commodity.

## Why WPC

WPC is a combination of the best characteristics of the two world's - Natural appearance and feel from Wood and Durability from Polymers.



Natural Appearance



Weather Resistant



Low Maintenance



Environment Friendly



Low Costs



Easy Workability



Design Flexibility



Light weight Sections



Waterproof



Slip Resistant



High Durability



Low Thermo dimensional change



High Strength and Density



Splinter Proof



Safe fit and concealed hardware



Termite Resistant



No Surface Treatment



Rot Proof

# Versatile Applications



Decking



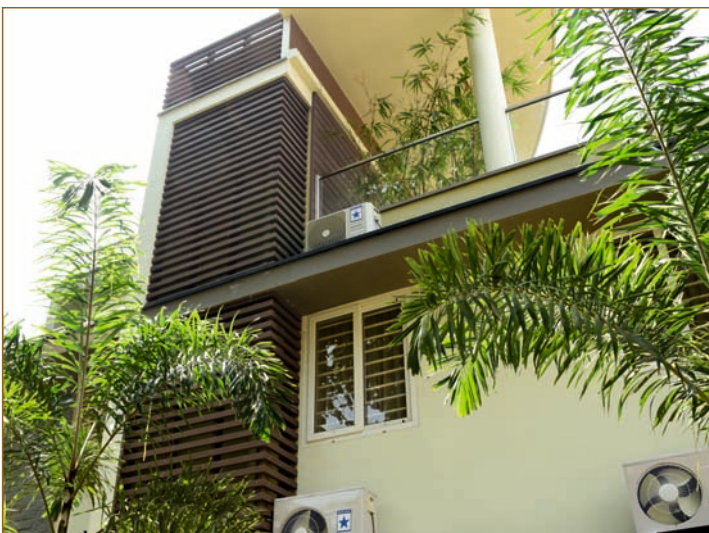
Cladding



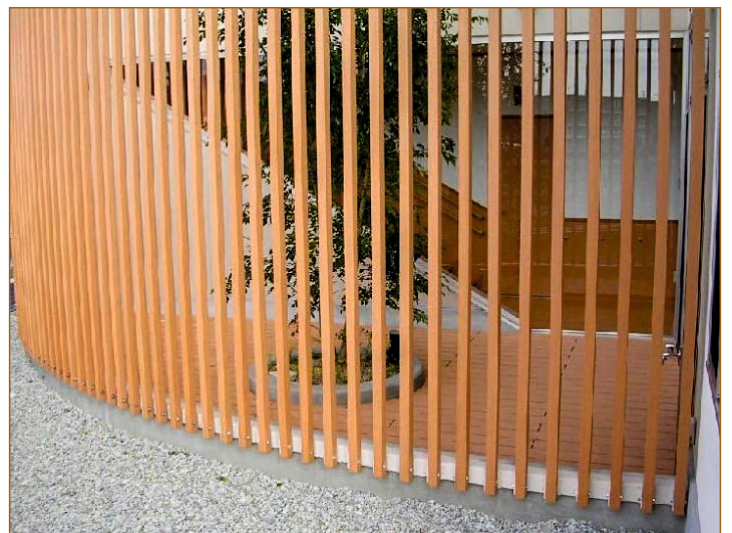
Pergola



Hand Rail



Louvers



Fins

# DECKING

Our fabulous range of low maintenance WPC decking is suitable for every need. It is available in a variety of wooden colors to enhance the look of your exterior.

Deck planks are fitted to an aluminium framework with concealed fixtures, offering barefoot safe and antiskid surfaces.



LOW  
MAINTENANCE



NO FADING,  
CRACKING OR  
SPLINTERING



NO  
OILING



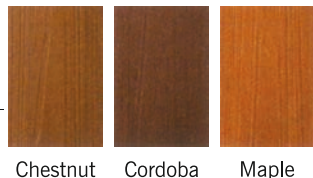
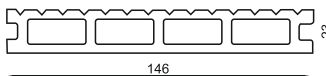
BAREFOOT  
SAFE



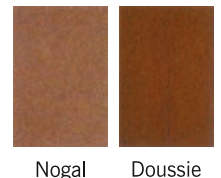
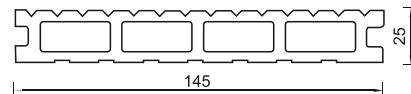
RESISTANT TO  
SALINITY,  
MILDEW & ROT



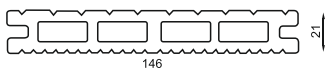
Profile Code : EWD146x23  
Standard Length : 2.90 mts / 9'6"  
Surface Finishes : Grained / Grooved



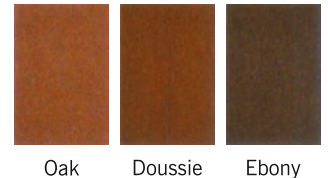
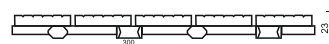
Profile Code : EWD145x25  
Standard Length : 2.90 mts / 9'6"  
Surface Finishes : Grooved



Profile Code : EWD146x21  
Standard Length : 2.90 mts / 9'6"  
Surface Finishes : Grooved



Profile Code : EWD300x300  
Standard Size : 300 mm x 300 mm  
Surface Finishes : Grooved



# CLADDING

Our cladding boards are widely preferred for furnishing facades. They offer a rich and appealing wooden look for the places they are installed. Interlocking assembly ensures no water leaks to the building superstructure and hollow core technology for insulation are benefits unavailable on other façade solutions.



NATURAL  
GRAINED  
TEXTURE



NO SURFACE  
COATING



CONCEALED  
FIXTURES



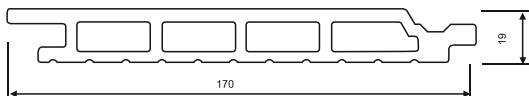
HOLLOW  
CORE



HIDE &  
INTERLOCK



Profile Code : EWD170x19  
Standard Length : 2.44 mts / 8'0"  
Surface Finishes : Grooved



Oak

Mahogany

Teak

Doussie

# PERGOLAS & FINS

Feature your garden walkway, passage way, courtyard or sitting area with WPC Pergolas and Fins. Our hollow profiles are the perfect material for pergolas, gazebos and elevation features. Our light weight sections replace heavy steel frames or wood which demand periodic maintenance and painting to avoid deterioration from exposure to weather or corrosion.



LIGHTWEIGHT  
SECTIONS



HIGH  
STRENGTH



NO SURFACE  
COATING



HIGH DURABILITY  
PRESERVED  
AESTHETICS



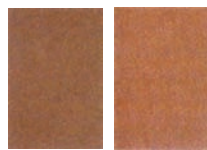
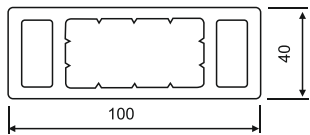
DESIGN  
OPTIONS



## Elevation Fin



Profile Code : EWD100x40  
Standard Length : 3.2 mts / 10'5"  
Surface Finishes : Sanded

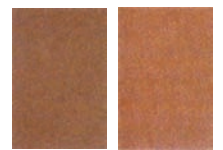
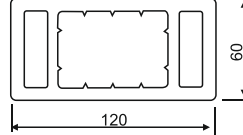


Nogal Mahogany

## Pergola Fin



Profile Code : EWD120x60  
Standard Length : 3.2 mts / 10'5"  
Surface Finishes : Sanded

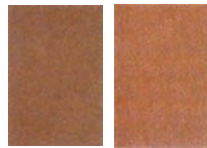
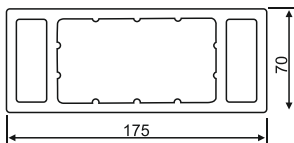


Nogal Mahogany

## Pergola Beam

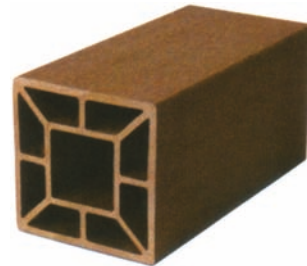


Profile Code : EWD175x70  
Standard Length : 3.2 mts / 10'5"  
Surface Finishes : Sanded

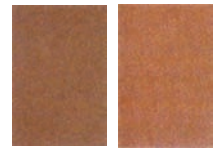
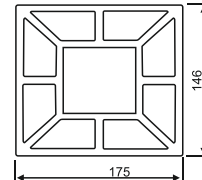


Nogal Mahogany

## Pergola Post



Profile Code :  
EWD146x146  
Standard Length :  
2.7 mts / 8'11"  
Surface Finishes :  
Sanded



Nogal Mahogany

# RAILINGS & LOUVERS

Combining the elegance of natural wood and the durability of composites, We offer Railing and louver profiles that are extraordinarily defiant to deterioration from effects of rigorous weathering. The railing modules we offer helps in protecting the garden areas and gives flexibility to personalize the living space. Our profiles and colors open up dimensions for design in many applications, replacing other materials that need regular maintenance.



DESIGN  
OPTIONS



ANTI CORROSIVE  
& WEATHER  
RESISTANT



NO CRACKING  
OR  
SPLINTERING

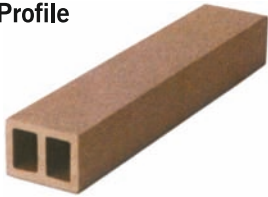


HIGH  
STRENGTH

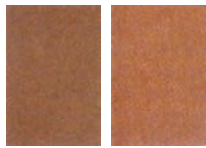
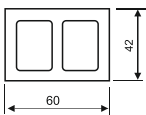


NO SURFACE  
COATING

## Railing Profile



Profile Code :  
EWD60x42  
Standard Length :  
2.90 mts / 9'6"  
Surface Finishes :  
Sanded

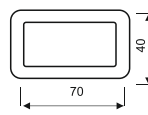


Nogal Mahogany

## Railing Profile

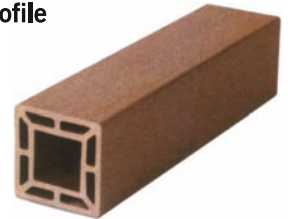


Profile Code :  
EWD70x40  
Standard Length :  
2.90 mts / 9'6"  
Surface Finishes :  
Sanded

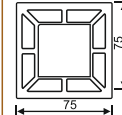


Nogal Mahogany

## Railing Profile



Profile Code :  
EWD75x75  
Standard Length :  
2.90 mts / 9'6"  
Surface Finishes :  
Sanded

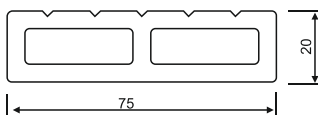


Nogal Mahogany

## Louver Profile



Profile Code : EWD75x20  
Standard Length : 2.44 mts / 8'0"  
Surface Finishes : Grained & Grooved

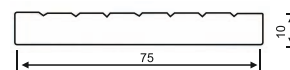


Nogal Doussie Mahogany

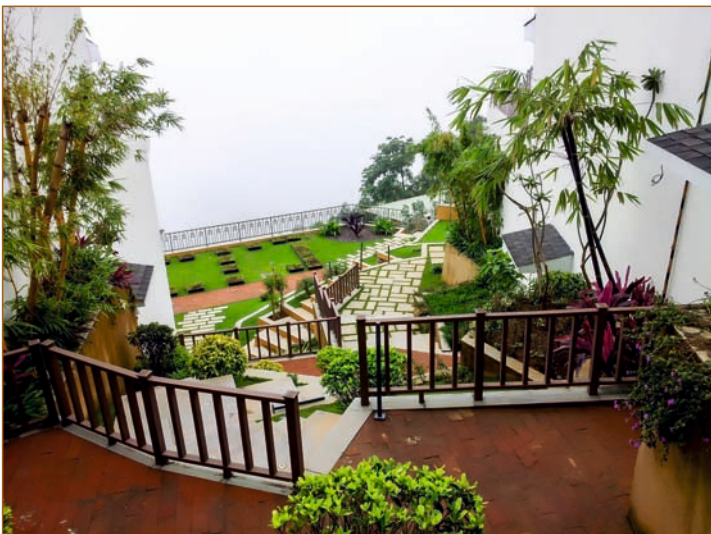
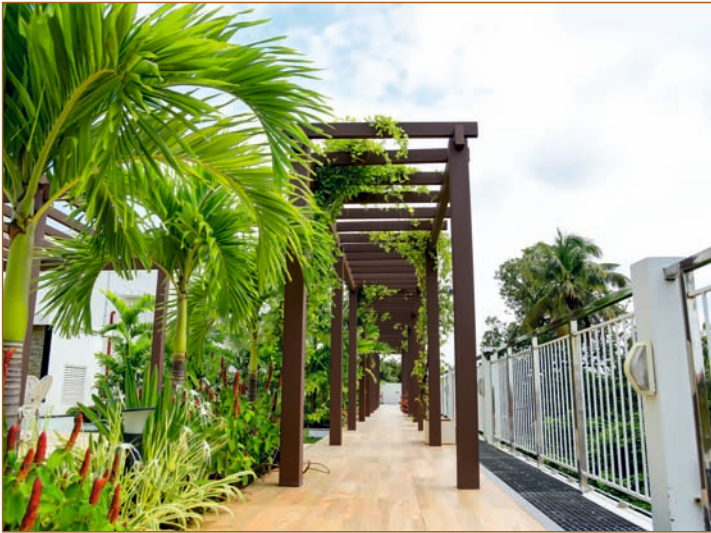
## Louver Profile



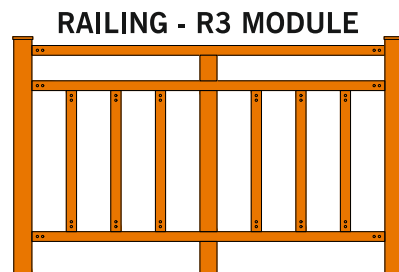
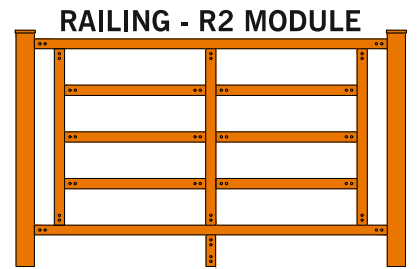
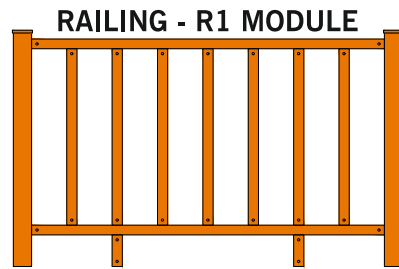
Profile Code : EWD80x10  
Standard Size : 2.44 mts x 8'08" mm  
Surface Finishes : Grained & Grooved



Nogal Doussie Mahogany





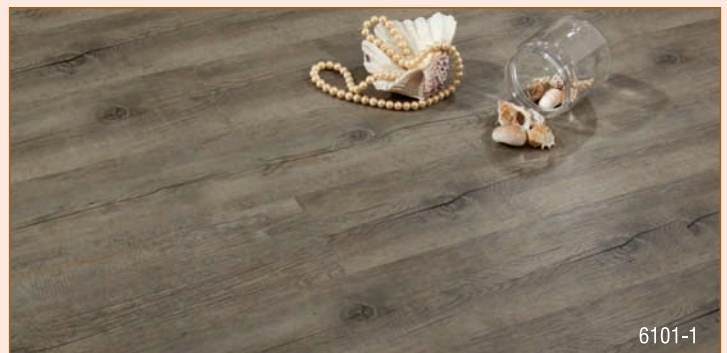
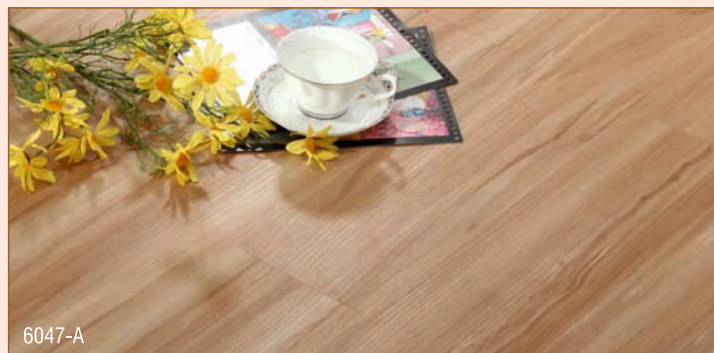
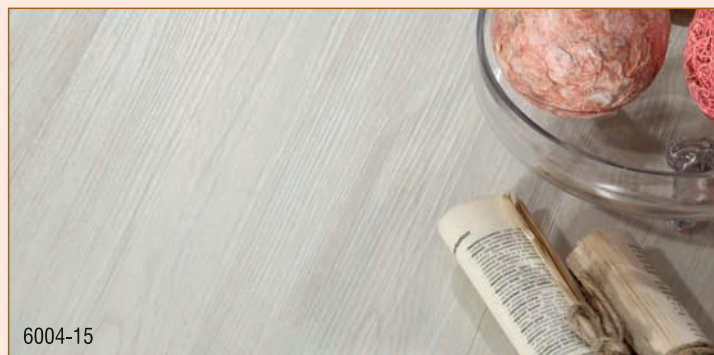


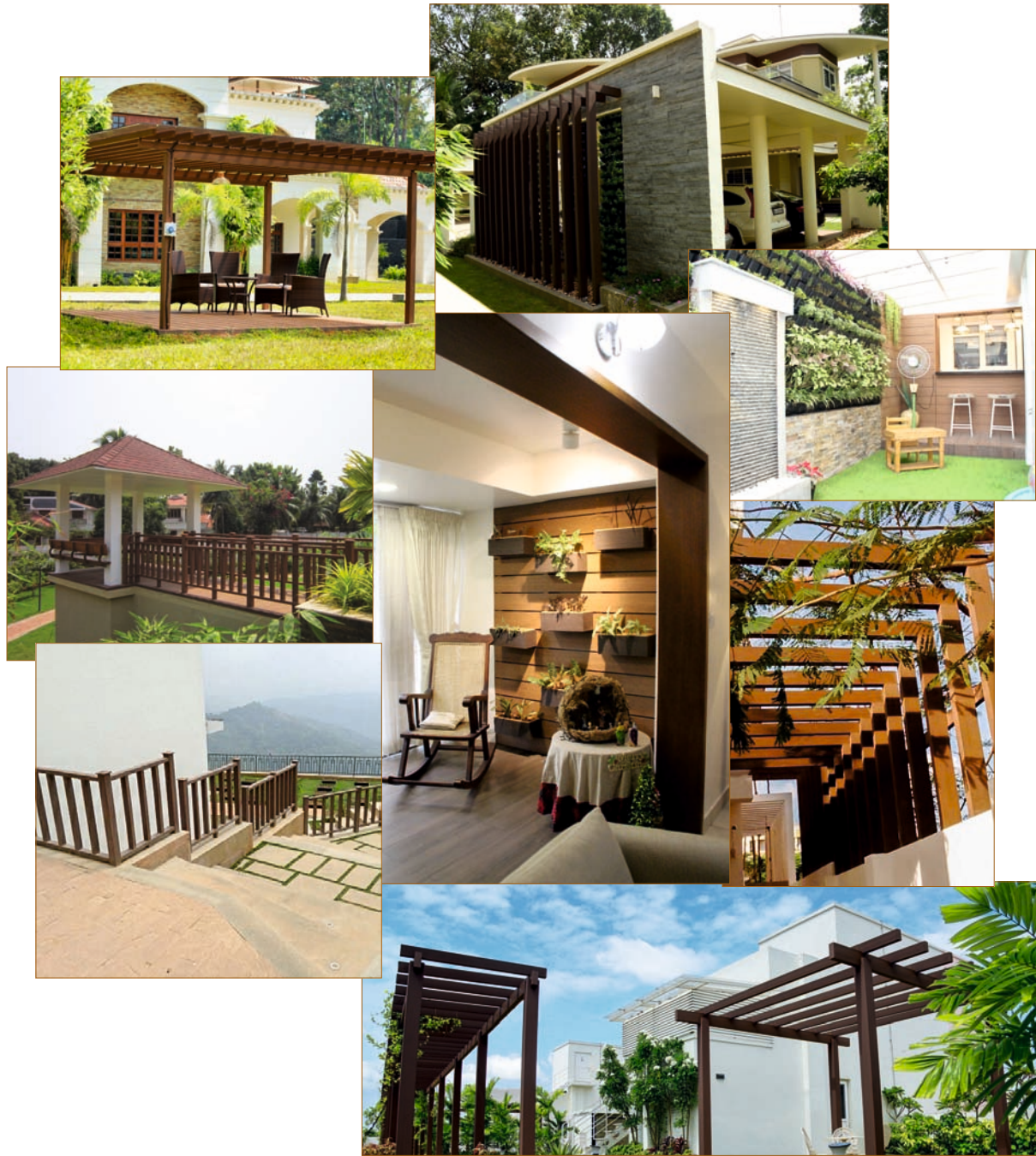
# INTERIOR - Skóra Floors

Skora Floors offers high quality environment friendly composite flooring solutions to enhance the aesthetic appeal of your living space. The name Skora Floors is synonymous with luxury, quality and beauty in the interior design aspects for residential, commercial and recreational spaces.

Skora Floors WPC & SPC range of new generation flooring will transform any interiors, with contemporary wooden styling without the hassles of wooden floor. Available in different shades & thickness, can be easily installed on different types of floor base. We offer an exquisite selection of beautiful and realistic wooden patterns for you to choose from.

- ❖ 100% waterproof
- ❖ No Glues
- ❖ Easy to install
- ❖ Termite proof
- ❖ Chemical resistant
- ❖ Scratch and wear resistant
- ❖ Acoustic friendly
- ❖ Recyclable
- ❖ Environment friendly
- ❖ Easy to clean
- ❖ Ant-skid
- ❖ Low maintenance
- ❖ Fire resistant
- ❖ Electric current resistant





Door No.43/3715, Jawahar Road  
Nandanath Kochako Lane, Chakkaraparambu,  
Thammanam, Ernakulam 682 032, Kerala

+91 4842 348 000  
info@cladeck.com  
www.cladeck.com  
+91 8111 818 000, +91 9645436443